

Sweeping Redefined...

usedsweepers

PRE-OWNED ROAD SWEEPER SALES



Brush House, Star Road, Partridge Green, Horsham, RH13 8RA

Tel: 01403 823293 Fax: 01403 711387 Mobile: 07720 678094

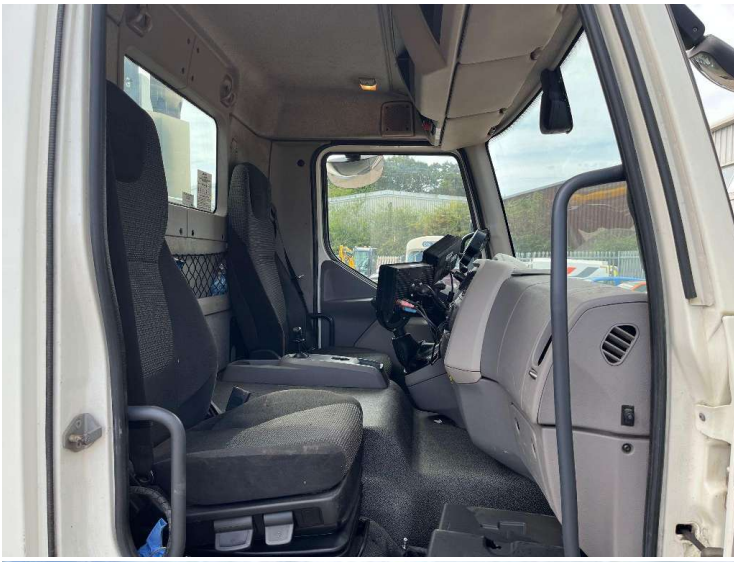
Email: sales@usedsweepers.co.uk www.usedsweepers.co.uk

Chassis	DAF 220	Vehicle Type	Road Sweeper
Equipment	SCARB M65T	Date of Registration	
Registration	RX16 WVK	MOT	New MOT on purchase
Mileage	77,671 miles (124,999 km)	Gross Weight	16,000 kg
Hours	3,931 swept, 3,931 total	Wheelplan	4 x 2

Details

Left-hand Drive, Transmission: Manual 9 Speed, Axles: 4x2, Suspension: Spring, Euro Rating: 6, Auxiliary Engine Turbo, Air Con, Air Seat, Day Cab, Camera(s), Dual Sweep, Variable Position Channel Brushes, Front Mounted Spray Bar, Front/Rear Double Beacon, Top Mounted Bar Beacon, Litter Hose, Power Wash, Sweep Wash





Information accurate as of: Thu, 21 Nov 2024 18:20:48